

**Review****Gut Microbiota and Obesity: Focus on Hormone Regulation and Appetite Control**

**Chaiwoo Park<sup>1,\*</sup>, Bei Li<sup>1,\*</sup>, Yun Deng<sup>1,\*</sup>, Linlin Shi<sup>2</sup>, Wanping Hu<sup>3</sup>, Guohua Lin<sup>4</sup>,  
Zhigui Zuo<sup>3,✉</sup>, Zhi Liu<sup>1,✉</sup>**

<sup>1</sup>Department of Biotechnology, College of Life Science and Technology, Huazhong University of Science and Technology, Wuhan, China. <sup>2</sup>National Engineering Research Center for Nanomedicine, College of Life Science and Technology, Huazhong University of Science and Technology, Wuhan, China. <sup>3</sup>Department of Colorectal Surgery, the First Affiliated Hospital of Wenzhou Medical University, Wenzhou, China. <sup>4</sup>Chang'e Innovation Biotech (Wuhan) Co., Ltd, Wuhan, China.

\* **These authors contributed equally.**

**✉ Correspondence**

Zhi Liu, Department of Biotechnology, College of Life Science and Technology, Huazhong University of Science and Technology, Wuhan, Hubei 430074, China. Contact number: +86 027 87001156, Email: [zhiliu@hust.edu.cn](mailto:zhiliu@hust.edu.cn).

Zhigui Zuo, Department of Colorectal Surgery, the First Affiliated Hospital of Wenzhou Medical University, Wenzhou, China. Contact number: +86 0577 55579472, Email: [zuo zg007@126.com](mailto:zuo zg007@126.com).

**Received:** October 24, 2020; **Accepted:** November 30, 2020; **Published online:** January 14, 2021.

**Cite this paper:** Chaiwoo Park, Bei Li, Yun Deng, Linlin Shi, Wanping Hu, Guohua Lin, Zhigui Zuo, Zhi Liu. (2021) Gut microbiota and obesity: focus on hormone regulation and appetite control. *Global Journal of Microbiology*, 2(1):1-16. <http://naturescholars.com/gjmico.020101>. <https://doi.org/10.46633/gjmico.020101>.

**Copyright**© 2021 by Scholars Publishing, LLC.

**Abstract**

The prevalence of obesity has continued to rise worldwide over the past decade. Chronic and excessive intake of unhealthy diets can alter the gut microbiota composition. This altered gut microbiota affects gut hormone secretion through their metabolites. Microbiota-mediated gut hormone levels can affect the host appetite. Probiotic strains, which are known for their beneficial functions, are associated with the improvement of gut microbiota and body weight control. This review provides detailed mechanisms of microbiota-mediated gut hormone secretion which is closely related to food intake and fat accumulation. Results show that gut dysbiosis negatively influences the sensitivity of leptin and insulin in hypothalamic neurons as well as gut hormone secretion. It can cause excessive energy intake and storage. Probiotics intervention improves intestinal microflora balance and ameliorates appetite-regulating hormonal activities, thereby preventing excessive food intake and obesity. The therapeutic efficacy of probiotic strains on obesity through appetite control would provide new insights into the prevention and control of obesity.

**Key words:** Gut Microbiota; Obesity; Gut Hormone; Appetite; Dysbiosis; Probiotic Treatment.

## 1. Introduction

The worldwide prevalence of obesity has doubled since 1980 and has shown a continuous augment that 5.0 % of children and 12.0 % of adults are defined as obese (1). Obesity increases the risk of developing several chronic diseases, including type 2 diabetes mellitus, hypertension, and even certain types of cancer (2). Efforts toward the prevention and early treatment of obesity have therefore drawn extensive attention around the world. The primary inducer of obesity and its associated disorders is the imbalance between energy intake and expenditure (3). Appetite acts as a positive regulator of energy balance. The excessive increased appetite is responsible for the worsening of body weight gain and an eating disorder, which eventually contributes to obesity (4). Mounting evidence has demonstrated that gut microbiota play an important role in food intake by regulating gut hormones. Gut hormones ghrelin (5), cholecystokinin (CCK) (6), peptide YY (PYY) (7), and glucagon-like peptide-1 (GLP-1) (8) are mainly produced by enteroendocrine cells (EEC). Leptin (9) and insulin (10) are produced by adipocytes and pancreatic beta-cells, respectively. A variety of bacterial derivatives including short-chain fatty acids (SCFAs), lipopolysaccharide (LPS), secondary bile acid (BA) act on gut hormone production which encodes information about satiety state and transmits it into the central nervous system (8, 11-14). In this review, we focused on gut hormones regulating appetite circuits in the brain via activating central and peripheral neurons. We summarized the physiological roles of bacterial metabolites in the gut hormones production and described their signaling pathways (Figure 1). This review provides detailed mechanisms of microbiota-mediated gut hormone activities and new insights of probiotic intervention on obesity treatment via appetite control.

## 2. Gut hormones regulation and appetite control

Gut hormones can activate appetite circuits in the brain. Hypothalamus and brainstem are mainly

responsible for appetite regulation by receiving hormonal signals from the gut (15). In the hypothalamus, there are two neurons responsible for appetite control with opposing effects. Neurons that express neuropeptide Y (NPY) and agouti-related peptide (AgRP) stimulate food intake, while neurons expressing pro-opiomelanocortin (POMC) inhibit eating behavior (Figure 1). Both neurons project signals into the paraventricular nucleus (PVN). Once receiving satiety signals from the gut hormones, POMC neurons produce  $\alpha$ -melanocyte-stimulating hormone ( $\alpha$ -MSH) which binds to melanocortin-4 receptors (MC4R) in the PVN, resulting in reduced food intake. On the other hand, activation of NPY/AgRP neurons not only stimulates the orexigenic Y1 and Y5 receptors in the PVN but also interrupts the anorexigenic  $\alpha$ -MSH signal by blocking MC4R in PVN, leading to increased appetite (15).

### 2.1. Leptin

Leptin, a 167-amino-acid product of the obese gene, is an anorexigenic hormone mainly produced by adipose tissue and transmits satiety signals to the central nervous system (9). Leptin reduces food intake by upregulating anorexigenic signals such as POMC, MC4R and downregulating orexigenic signals such as NPY and AgRP (15). Both overweight people and preclinical animal models showed a higher level of leptin than lean groups. Besides, plasma leptin levels are highly correlated with body mass index (BMI) (16). Interestingly, a high level of leptin in the obese group failed to transmit satiety signals due to leptin resistance (17, 18). Therefore, enhancing leptin sensitivity and leptin production may promote body weight loss by reducing food intake.

It has been reported that a high-fat diet (HFD) is associated with leptin resistance although the mechanisms remain unclear (19, 20). Lin S., et al. demonstrated that peripheral but not central leptin insensitivity occurred in mice after 8 weeks of HFD treatment. Meanwhile, significant central leptin resistance was detected after 16 weeks of HFD

treatment (20). De Lartigue G., et al. also observed a similar result in the HFD mouse model. Results showed that leptin resistance occurred in vagal afferent neurons but not in hypothalamic neurons after 8 weeks of HFD treatment, indicating that peripheral leptin insensitivity may be related to central leptin resistance (19). Furthermore, they found that bacterial LPS acted directly on vagal afferent neurons which co-express toll-like receptor 4 (TLR4) and leptin receptor *in vitro*. Besides, LPS also upregulated the suppressor of cytokine signaling-3, a negative regulator of leptin signaling, which led to leptin resistance (19). Recently, Bagarolli, R.A. group demonstrated that HFD-induced gut dysbiosis increased intestinal permeability in mice by reducing ZO-1 and Occludin expressions which play important roles in maintaining intestinal barrier homeostasis. This resulted in increased serum LPS and caused leptin resistance (18). Taken together, these data suggested that HFD may cause gut dysbiosis and destroy intestinal epithelial cells, leading to increased serum LPS. This LPS may act directly on vagal afferent neurons and induce peripheral leptin resistance by stimulating the suppressor of cytokine signaling-3, which subsequently causes central leptin resistance.

In the large intestine, gut microbiota generates SCFAs through fermentation of the undigested dietary fibers, mainly including butyrate, acetate, and propionate (21). It has been reported that SCFAs have various beneficial functions on appetite control as well as energy homeostasis (22). Roselli, M., et al. found that oral administration of probiotic mixture including *Bifidobacterium lactis* and *B. breve* could significantly promote leptin secretion by increased SCFAs production (23). Besides, Zhang XL, et al. also found that leptin production was stimulated by the administration of soymilk fermented by *B. bifidum*, *L. casei*, and *L. plantarum*, but not soymilk alone. These results suggest that metabolites of these probiotics such as SCFAs could stimulate leptin production, leading to reduced food intake and body weight loss (24).

SCFAs increase the level of leptin in the plasma through activation of free fatty acid receptors (FFAR) FFAR2/GPR43 and FFAR3/GPR41 (11, 25). Hong YH., et al. demonstrated that SCFAs-induced FFAR2 activation on adipocytes stimulated adipocyte differentiation and increased the level of leptin (25). Furthermore, Xiong et al. firstly demonstrated that SCFAs-induced FFAR3 activation on adipocytes increased leptin production (11). Nevertheless, recent studies have failed to detect the FFAR3 expression on adipocytes even though they used the same PCR primers, which suggested that the FFAR3 expression on adipocytes was quite low or undetectable (25, 26). However, in FFAR3 knockout mice, SCFAs-induced leptin secretion was attenuated by downregulated FFAR2 expression (26). These results indicate that SCFAs-induced FFAR3 activation was partially related to FFAR2. Therefore, the crosstalk between FFAR2 and FFAR3 in adipocytes still needs to be further investigated.

## 2.2. Ghrelin

Ghrelin is an orexigenic peptide hormone secreted from enteroendocrine X/A cells in the stomach, which can transmit the hunger signal from the periphery to the central nervous system. Ghrelin is composed of 28-amino acid. Octanoylation of serine residue located at position three of ghrelin is essential for binding to the growth-hormone-secretagogue receptor and to break through the blood-brain barrier (5). There are two pathways stimulating appetite by ghrelin have been reported so far. One is that the peripheral ghrelin can reach the hypothalamus by penetrating the brain through the blood-brain barrier and directly act on NPY/AgRP neurons in the hypothalamus. The other is that ghrelin interacts with vagal afferent neurons in nodose ganglion. Ghrelin signal is transmitted to the nucleus tractus solitaries via nodose ganglion and then relayed to NPY/AgRP neurons in the hypothalamic neurons (5, 27). The NPY/AgRP neurons have crosstalk with POMC neurons, thus

NPY/AgRP neurons activated by ghrelin suppress anorexigenic signals through inhibiting POMC neurons as well as enhance orexigenic signals through activating Y1 receptor in PVN (5, 15).

A high level of ghrelin stimulates food intake which induces body weight gain, suggesting that the downregulation of ghrelin could be beneficial to prevent weight gain (4). Ghrelin production is suggested to be mediated, in part, by bacteria living in the stomach. *Helicobacter pylori* is a Gram-negative bacterium that lives in the human stomach. *H. pylori* is detected in more than 50% of adults around the world. *H. pylori* infection is correlated with gastric diseases including gastritis, gastric ulcer, and gastric cancer (28). Interestingly, a clinical study showed that the level of ghrelin in plasma among *H. pylori*-positive subjects was significantly lower than *H. pylori*-negative subjects (28). In addition, plasma ghrelin levels in healthy people increased significantly after eradication of *H. pylori*, leading to markedly increased food intake and body weight gain (29). These data suggested that *H. pylori* could be associated with the decreased plasma ghrelin level and reduced food intake. Interestingly, compared with Asians, the Western population has a lower prevalence of *H. pylori* but a higher prevalence of obesity (30). This association indicates that *H. pylori* might have a role in weight loss through a reduction of ghrelin levels in healthy individuals although the associated infection often causes gastric diseases.

Bando M., et al. suggested that interleukin-1b (IL-1b) can directly reduce ghrelin production by binding to ghrelin-producing cells which express IL-1 receptor type 1 (31), although the previous study had failed to detect IL-1 receptor in the ghrelin-producing cells (32). Wang L., et al. demonstrated that intravenous injection of LPS and IL-1b in rats showed an inhibitory effect against ghrelin production. However, the intravenous injection of IL-1 receptor antagonist significantly attenuated the suppressive effect of LPS. This indicated that LPS may inhibit the ghrelin secretion by inducing IL-1b production (12). Interestingly, *Lactobacillus helveticus* which was resistant against gastric juice and acidic condition (33),

also stimulated IL-1b production in macrophages *in vitro* (34). In the chicken blood monocytes test, TLR9 agonist CpG-oligodeoxynucleotide significantly upregulated IL-1b *in vitro* (35). Besides, CpG-motifs were also detected in certain probiotics such as *L. helveticus* (36). Taken together, certain probiotics such as *L. helveticus* might reduce a ghrelin level in the stomach through an increased level of IL-1b stimulated by CpG-motifs, leading to reduced food intake.

Torres-Fuentes C., et al. recently reported that both SCFAs and the supernatant of SCFAs-producing bacterial inhibited the ghrelin signaling *in vitro*. They demonstrated that SCFAs disrupted ghrelin-mediated calcium mobilization, inhibiting the ghrelin signaling *in vitro*. This result suggested that circulating SCFAs may affect the ghrelin pathway in nodose ganglion neurons which express both FFAR3 and ghrelin receptors (37).

### 2.3. Cholecystokinin

CCK is an anorexigenic hormone released by intestinal I-cells in the duodenum in response to dietary lipid and protein through G-protein coupled receptor GPR40 and calcium-sensing receptor, respectively. CCK directly acts on vagal afferent neurons which primarily project to the nucleus tractus solitaries and activate subsequent pathways that control appetite (6). The reduced CCK sensitivity and a low level of CCK have been found in obese individuals (6, 38). According to Duca FA.'s research, CCK plays a major role in satiety transmission which is dietary lipids-mediated (39). Their study showed that the deficiency of CCK-mediated satiety signals during a high-fat diet caused excessive calorie intake and body weight gain (39). Therefore, improvement of the sensitivity and concentration of CCK is beneficial for obesity treatment.

The CCK secretion by intestinal I-cells can be stimulated by the activation of toll-like receptors including TLR4, TLR5, and TLR9. The bacterial LPS, flagellin, and CpG-motifs activate TLR4, TLR5, and TLR9 in intestinal I-cells respectively

(40). These ligands are normally found in pathogenic bacteria, thus bacterial infection could induce excessive CCK production, provoking nausea, and emesis. Interestingly, however, a high number of CpG-motifs (GTCGTT, optimal for human TLR9) has been also detected in several probiotics such as *L. plantarum*, and *L. rhamnosus* (36), suggesting that these probiotic strains may stimulate CCK secretion and reduce food intake. Furthermore, increased CpG-motifs by probiotics could ameliorate mucosal functions and the immune system for human health[36]. In the zebrafish larvae, the administration of *L. rhamnosus* upregulated CCK gene expression through modulation of gut microbial composition and increased free fatty acids concentration which stimulates CCK production (41). Meanwhile, it is also possible that a large number of CpG-motifs of *L. rhamnosus* may promote CCK production. Belguesmia Y., et al. also found that *L. acidophilus* and *L. gasseri* enhanced CCK secretion significantly in STC-1 cells in vitro (42). These data suggest that certain *Lactobacillus* species may reduce food intake through stimulation of CCK production, leading to weight loss. Future study is needed to clarify their impact on appetite and body weight in proper animal models.

#### 2.4. Peptide YY

Gut hormone peptide YY is mainly produced by large intestinal L-cells and transmits satiety signals from the gut to the hypothalamus through peripheral circulation (7). Two molecular forms of PYY including PYY<sub>1-36</sub> and PYY<sub>3-36</sub> have been identified. PYY<sub>3-36</sub> is the predominant of PYY in postprandial human serum (43). Peripheral injection of PYY<sub>3-36</sub> in mice inhibited food intake and reduced bodyweight gain but not in Y2 receptor (Y2R)-null mice, which indicated that Y2R was necessary for the anorexic function of PYY<sub>3-36</sub> (7). PYY acts directly on hypothalamic NPY neurons by activating of Y2R. PYY-induced Y2R activation in NPY neurons decreased *Npy* expression which projects hunger signal to ascending pathways (7). It has been reported that a lower circulating level of PYY was detected in

obese people than in normal controls (44, 45). Therefore, the recovery of impaired PYY secretion in obese patients may contribute to body weight loss.

It has been reported that gut microbiota can regulate plasma PYY level by producing SCFAs and secondary bile acids which can bind to FFAR2/3 or G-protein coupled receptor TGR5 on L-cells, respectively (46-48). It is supported by Qu L., et al. who found the lower concentration of SCFAs and PYY in the diabetic rat model compared to normal controls. After oral administration of *Lactobacillus casei* for 6 weeks, the abundance of total SCFAs-producing strains was significantly increased, leading to enhanced SCFAs production, resulting in increased PYY levels (49). Brooks L., et al. found that in normal but not *ffar2*-deficient mice, SCFAs increased PYY levels by upregulating *Pax4* which is an essential transcription factor for L-cell differentiation. This result indicated that SCFA-induced FFAR2 activation in L-cells can increase the PYY level by stimulating L-cell differentiation (46). Besides, SCFAs-induced PYY production was significantly blunted in FFAR3 knock out mice, indicating that FFAR3 also played an important role in PYY secretion. However, the underlying mechanisms are still poorly understood yet (48).

Primary BAs are physiological important steroid acids that are produced in the liver. They can promote intestinal absorption and transport of nutrients, especially lipids (50). Besides, bile acids can increase PYY production by activating TGR5 (51). In the small intestine, primary BAs are deconjugated by bile salt hydrolases which are produced by various intestinal bacteria, such as *Bacteroidetes* (52). In the large intestine, unconjugated primary BAs are transformed into unconjugated secondary BAs by gut bacteria, mainly including *Clostridium scindens* and *C. hylemonae* (52). Although secondary BAs have been reported to be correlated with colon cancer, they also play an important role in preventing intestinal infections (52). Furthermore, secondary BAs are strong activators of TGR5 compared to

primary BAs (53), indicating that secondary BAs stimulate PYY secretion in L-cells stronger than primary BAs. Bile acids should be transported to the basolateral side for binding TGR5 because the TGR5 of L-cells is basolaterally located. Primary BAs need ileal-bile acid transporter to be absorbed, while secondary BAs can be absorbed through diffusion without active transporter (13). These data indicate that gut bacteria increase the basolateral pool size of BAs that stimulates PYY secretion through activation of TGR5 on L-cells, leading to reduced food intake.

### 2.5. GLP-1

Intestinal L-cell that synthesizes PYY also produces another hormone, Glucagon-like peptide-1 (GLP-1), which is currently selected as a drug target for type 2 diabetes (54). Both clinical trials and animal studies have shown that GLP-1 and GLP-1 receptor agonists can reduce food intake and lead to body weight loss (55-57). This inhibition on satiety and appetite may be mediated by the synergistic effects in the gut and brain. GLP-1 acts on central and peripheral receptors that transmit anorexigenic signals to NPY/AgRP and POMC neurons (58). Gut microbiota can influence the secretion of intestinal GLP-1 through their cellular components and metabolites (8, 14).

SCFAs promote the secretion of GLP-1 by L-cells through activation of FFAR2 and FFAR3, which is similar to PYY (8, 47, 55). Patrice et al. also found that the non-digestible carbohydrates diet promoted the L-cell differentiation in male Wistar rats and induced more endogenous GLP-1 secretion (59). Probiotics with mixed bacteria such as VSL#3 were proved to alter gut flora composition in HFD mice and promoted GLP-1 secretion (55). Yadav H., et al demonstrated that butyrate was a key factor that stimulated the release of GLP-1 from intestinal L-cells (55). Zhao et al. found that dietary fiber significantly increased the diversity and abundance of SCFA-producing bacteria in a randomized clinical trial. This modified gut microflora resulted in more acetate and butyrate production that stimulated GLP-1 and PYY secretion (60). Acetate and butyrate improved glucose homeostasis by inducing intestinal

GLP-1 and PYY production. Hemoglobin A1c levels were also improved which was partly due to the increase of GLP-1 production.

Bile acid receptors, including farnesoid X receptor (FXR) and TGR5, belong to the main targets of metabolic disease transformation and intervention research. Bile acids are known to stimulate the secretion of GLP-1 secretion (61). This effect was possibly mainly mediated by TGR5 which was located on the basolateral L-cell membrane (62, 63). Results found that INT-767, as the dual FXR and TGR5 agonist, has beneficial effects on GLP-1 secretion inducing *Tgr5* gene expression, increasing  $Ca^{2+}$  level and cAMP activity in HFD-induced obese mice (64). However, activation of FXR reduced FFAR2 expression and signaling transduction, attenuating SCFAs-induced GLP-1 secretion (65).

Indole, another important bacterial metabolite, can affect GLP-1 secretion in L-cell. Chimere et al. reported that indoles inhibited voltage-gated  $K^{+}$  channels, promoted  $Ca^{2+}$  entry, and thus strongly stimulating GLP-1 secretion (66). Nevertheless, their work also showed that indoles could slow down ATP production by blocking NADH dehydrogenase, resulting in a sustained decrease of GLP-1 secretion. Hence, more explorations are needed to elucidate the complex association between indole and GLP-1 production.

LPS, the major component of Gram-negative bacterial outer membrane, are involved in the regulation of intestinal GLP-1 secretion. Lebrun et al. reported that gut bacterial LPS easily leaked into the bloodstream following the intestinal barrier injury, leading to rapidly increased plasma GLP-1 levels through toll-like receptor 4 (TLR4)-dependent manner (14). Recent studies further revealed that LPS required distal intestinal *Gcg* expression to maximize plasma GLP-1 level (67).

### 2.6. Insulin

Insulin is a protein hormone, secreted by  $\beta$ -cells in the pancreas. It is involved in regulating carbohydrates, fat metabolism, and controlling

blood sugar balance (10). Insulin can stimulate POMC neurons and inhibit NPY neurons, thereby reducing food intake (68, 69). It is supported by Jastreboff AM., et al. who demonstrated that individuals with insulin resistance are more likely to overeat, leading to bodyweight gain (70). In the insulin signaling pathway, neurotransmitter dopamine (DA) plays an important role in feeding behavior control (71). Insulin can directly stimulate DA transporters which inactivate DA signaling by transporting DA back into the DA nerve terminal from the synapse. Hence, insulin inhibits the effect of dopamine and suppresses appetite (71, 72). Accordingly, insulin is considered as an anorexic hormone and plays an important role in appetite control.

It has been reported that gut microbes can influence the insulin signaling pathway through several of their derivatives including SCFAs, LPS, branched-chain amino acids (BCAAs). The effects of SCFAs-activated FFAR2/FFAR3 on insulin secretion in pancreatic  $\beta$ -cells are controversial both *in vivo* and *in vitro* (73). Tang C et al. found that mice lacking FFAR2 and FFAR3 showed greater insulin secretion, indicating that SCFAs-activated FFAR2/3 may inhibit insulin production (74). In contrast, McNelis JC et al. demonstrated that *ffar2*-deficient mice have significantly lower insulin secretion in response to dietary glucose, suggesting that FFAR2 activation may stimulate insulin production by pancreatic  $\beta$ -cells (75). These discrepancies might be due to the FFAR-mediated alteration of other hormone levels including GLP-1 and leptin which can influence insulin secretion. Interestingly, it has been reported that SCFA, especially butyrate may improve insulin sensitivity. In the clinical trial, subjects who received fecal microbiota transplantation from lean donors improved insulin sensitivity through the increased prevalence of butyrate-producing strains (76). It consists of other data showing that vancomycin treatment reduced the abundance of butyric acid-producing bacteria and impaired insulin sensitivity (77). Besides, oral administration of butyrate induced the increased insulin sensitivity and weight loss in

mice (78). Collectively, the improvement of butyrate-producing gut bacteria could ameliorate insulin resistance and insulin-mediated appetite control. Furthermore, Carvalho BM., et al. also showed that antibiotics-induced gut microbiota modification in HFD-induced obese mice ameliorated insulin sensitivity through a decrease in serum LPS levels and an increase in SCFA levels. After the injection of LPS, however, the increased insulin sensitivity was significantly attenuated, demonstrating that LPS is closely associated with obesity-induced insulin resistance (79).

Also, branched-chain amino acids have been considered as an inducer of insulin resistance. Recently, Pedersen HK., et al. observed a high level of branched-chain amino acids in the serum of insulin-resistant patients, among which the key strains were *Prevotella copri* and *Bacteroides vulgatus*. Their results showed that two weeks of *P. copri* administration in the HFD mice model caused insulin resistance by enhancing serum BCAA levels (80). In contrast, the administration of *P. copri* to mice with a high-fiber and low-fat diet improved insulin sensitivity by producing succinate which is a substrate for intestinal gluconeogenesis (81). These results suggest that the effects of certain bacterial strains such as *P. copri* on insulin sensitivity could be totally different depending on the diet style.

Furthermore, anorexigenic hormone GLP-1 and leptin are also involved in insulin regulation. Muller, T.D., et al. suggested that GLP-1 stimulates both the synthesis and secretion of insulin via multiple cAMP-dependent and PKC-dependent pathways (82). On the contrary, leptin has negative effects on insulin secretion from pancreatic  $\beta$ -cells (83).

### 3. Gut microbiota and their derivatives in appetite control

There are increasing studies on bacterial metabolites and appetite regulation. In the gastrointestinal tract, bacterial metabolites and cellular components including SCFA, LPS, ClpB,

and CpG molecular patterns could be associated with the gut hormones production, affecting the host appetite. Therefore, the abnormal concentration of bacterial metabolites may cause eating disorders which could eventually contribute to obesity.

### 3.1. SCFAs

Plentiful data have demonstrated that SCFAs have beneficial effects on the host immune system, energy homeostasis, and appetite control (22). In the context of obesity, SCFAs may prevent weight gain by reducing food intake through the secretion of anorexigenic hormones including PYY, GLP-1, and leptin by activating the FFAR2 and FFAR3 (26, 46, 48). It is supported by one clinical study showing that acute inulin-propionate ester supplementation increased plasma PYY and GLP-1 levels and reduced food intake compared to inulin-control. Besides, the long-term supplementation with inulin-propionate ester for 6 months strongly prevented body weight gain in obese individuals compared to inulin-control (82). This is consistent with other clinical data providing that healthy overweight-adults with oligofructose supplementation which is mainly fermented by gut bacteria into SCFAs showed weight loss over 12 weeks through decreased food intake. Meanwhile, the control group with maltodextrin showed no notable differences in food intake and body weight (83).

In contrast, it has also been reported that SCFAs could be used as an energy source, thus might increase energy harvest and promote weight gain. Bergman, E. demonstrated that daily calories absorbed from SCFAs are equivalent to ~10% of the human caloric requirements (84). This is supported by Isken F., et al. who demonstrated that long-term supplementation of highly fermentable soluble fiber for 45 weeks in the HFD-mice model increased body weight profoundly compared to control with partially fermentable insoluble fiber (85). Turnbaugh PJ. et al. also demonstrated the increased energy absorption in the obese mice through enhanced SCFAs in caecum (86). Taken together, SCFAs might be contributed to increased energy harvesting as well as reduce food

intake by stimulating anorexigenic hormone production. The discrepancy between SCFAs-induced bodyweight changes might be due to their different dosage. Increased energy harvesting from SCFAs sometimes could outweigh their anorexigenic effects. Therefore, a well-designed long-term human study is needed to elucidate the impact of SCFAs on body weight.

### 3.2. Bacterial components

LPS, the major component of Gram-negative bacterial outer membrane, is an endotoxin that causes inflammation when entering the circulation. Different levels of endotoxin activity may be owing to variations in the detailed lipid A structure[87]. People with an unhealthy diet and suffer from obesity are more likely to have chronic inflammation in their bodies. LPS may play an important role in the inflammation caused by unhealthy diets. High-fat food significantly increases insulin resistance, serum LPS, and lipid levels, leading to obesity in rats (88). Jamar et al. also reported that hyperlipidemic diets can stimulate TLR4 inflammatory pathway by promoting LPS translocation and lipopolysaccharide-binding protein activation. TLR4 inflammatory pathway modulates the feeding center in the brain (89). A study of rats has shown that chronic low-dose LPS treatment reduced vagal afferent leptin signaling and decreased CCK-induced satiety (90). Gut microbes may promote host appetite and possibly leading to obesity by releasing LPS.

When the intestinal barrier is broken, much LPS passes through the intestinal barrier and enters the bloodstream, leading to inflammation. LPS is also considered as a cause for immune stress-induced anorexia and  $\alpha$ 2-adrenoceptors may participate in this appetite suppressive effect (91). In rodent studies, secretion of leptin (92, 93) and GLP-1 (14) increased and triggered immune responses in the LPS-induced inflammation model. These findings expand traditional concepts of gastrointestinal hormones to encompass the sensing of



inflammatory stimuli and compromised mucosal integrity, linking gastrointestinal hormones secretion to gut inflammation. In the case of infection caused by large doses of LPS, the effect on host appetite is negative.

CpG-motifs are molecular patterns found abundantly in microbial genomes. It has been mainly studied in immunity due to its immunostimulatory effects (94). However, it has been reported that CpG-motifs stimulated CCK secretion by activating TLR9 in murine intestinal enteroendocrine cells (40). Besides, CpG-motifs strongly induced IL-1 $\beta$  production by chicken monocytes (35) which is a negative regulator of ghrelin secretion (31), suggesting that bacterial CpG-motifs may play a role in appetite control. Hildebrandt MA., et al. demonstrated that mice fed with a high-fat diet exhibited an altered gut microbiome with significantly increased *Firmicutes* and decreased *Bacteroides* which is similar to the gut microbiome observed in obese patients (95). Interestingly, CpG-motifs are rich in *Bacteroides* but relatively low in *Firmicutes* (36). The plasma levels of CCK were also significantly lower in obese individuals than in lean controls (38). Taken together, these data suggest that an increased ratio of *Firmicutes* to *Bacteroides* induced by HFD may decrease the total amount of bacterial CpG-motifs. This decreased CpG-motifs could induce a low CCK level, leading to increased host appetite. It is a possible way to understand the mechanisms between altered gut microbiota composition and low levels of CCK in obese patients.

*Escherichia coli* ClpB heat shock disaggregation chaperone protein has been reported that ClpB may influence host appetite as an antigen-mimetic of the anorexigenic  $\alpha$ -MSH due to their sequence homology and anti-ClpB immunoglobulins crossreactive with  $\alpha$ -MSH (96). Tennoune N., et al. demonstrated that the intragastric gavage in mice with *E. coli* K12 reduced food intake and body weight. However, this anorexigenic effect was significantly attenuated in mice with ClpB-deficient *E. coli* K12. It suggests that ClpB produced by *E. coli* K12 may be associated with reduced food intake (96). It is supported by recent data

showing that the intragastric gavage of ClpB-producing *Hafnia alvei* increased plasma a level of ClpB protein and reduced food intake in the obese mice (97). Interestingly, a low abundance of enterobacterial ClpB gene was detected in obese humans compared with lean individuals (97). This is similar to other data showing a low prevalence of Enterobacteriaceae which are ClpB-synthesizing bacteria in obese individuals (98). These results indicated that a low abundance of Enterobacteriaceae might be associated with obesity through decreased ClpB production. On the contrary, Tennoune N., et al. also demonstrated that ClpB-immunized mice by acute injection of ClpB showed increased food intake and body weight due to the stimulated autoantibodies reactive with  $\alpha$ -MSH. Therefore, further research is needed to elucidate the effect of ClpB on  $\alpha$ -MSH signaling and host appetite.

#### 4. Conclusion

To date, despite the high prevalence of obesity and related diseases around the world, effective appetite suppressants for obesity treatment are still in scarcity. Interestingly, certain probiotic strains, as the appetite suppressant, have shown great potential in improving satiety hormone signaling through modifying gut microbiota composition and their metabolites. However, the specific mechanisms remain unclear. Future studies are needed to further elucidate the molecular mechanisms of microbiota on satiety hormone signaling improvement.

#### Declarations

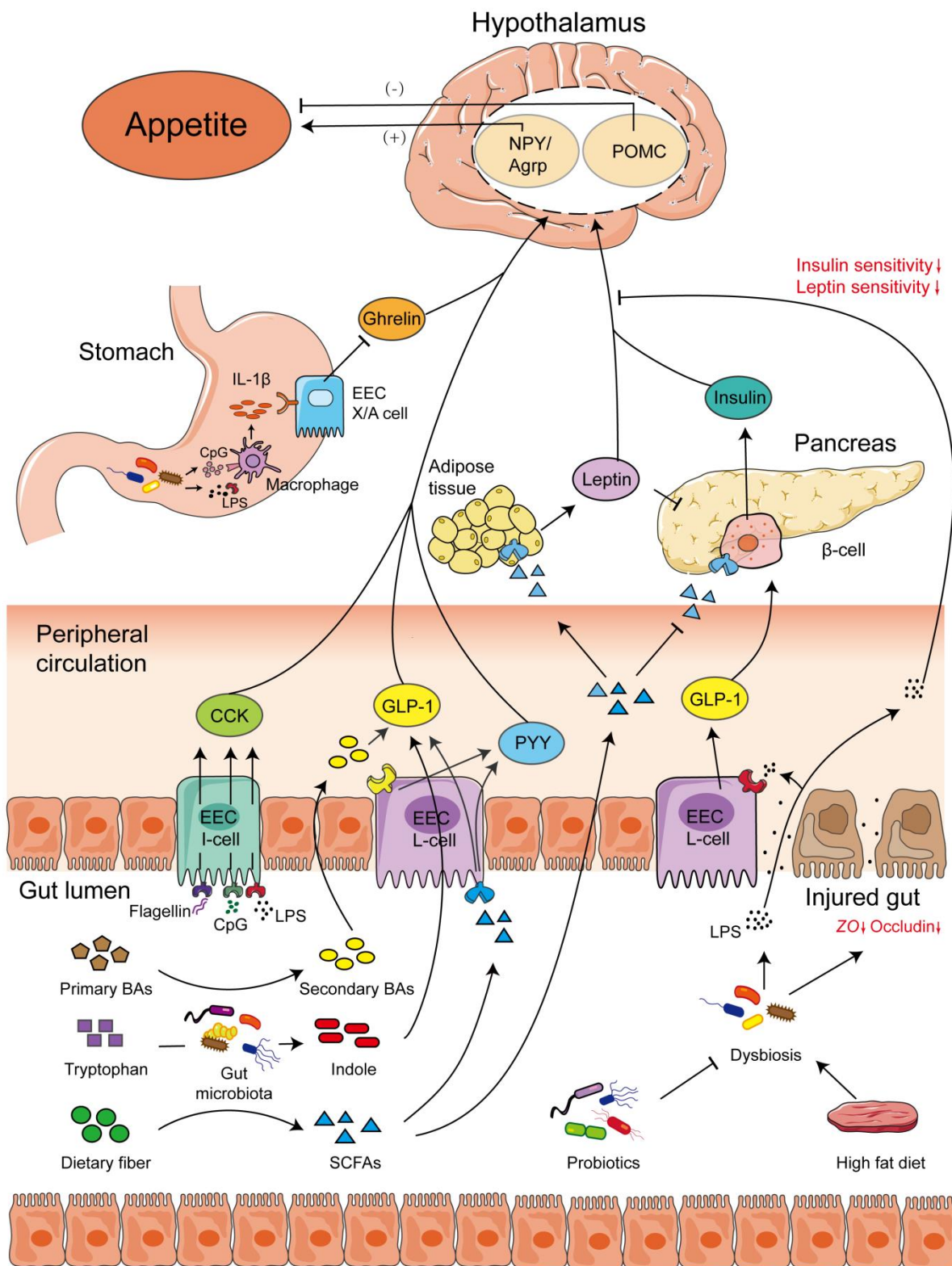
##### 1) Consent to publication

We declare that all authors agreed to publish the manuscript at this journal based on the signed Copyright Transfer Agreement and followed publication ethics.

##### 2) Ethical approval and consent to participants

Not applicable.

##### 3) Disclosure of conflict of interests



**Figure 1. Schematic representation of gut microbial pathways to host appetite via control of appetite-regulating hormones.**

Dietary nutrients are used by gut microbiota for growth, affecting to microbiota composition. Gut microbiotas produce a variety of metabolites, including secondary bile acids, indole, SCFA, and cellular components including LPS, flagellin, CpG-motifs. These metabolites can influence the host appetite through direct

interaction with gut hormone-producing cells including EEC cells, adipocytes, and pancreatic  $\beta$ -cells, or affecting indirectly by inducing cytokines. The interaction of bacterial metabolites with hormone-producing cells influences the levels of appetite-regulating hormones PYY, GLP-1, CCK, Leptin, Ghrelin, and insulin. The gut dysbiosis can cause an imbalance of these hormones and damage the intestinal barrier, leading to increased serum LPS which can impair insulin and leptin sensitivity. Appetite-regulating hormones affect the host eating behavior by transmitting the satiety state from the gut to the brain through hypothalamic orexigenic NPY/AgRP and anorexigenic POMC neurons.

We declare that no conflict of interest exists.

#### 4) **Funding**

This work is supported by the National Key Research and Development Project of China (2019YFA0905600) and Wenzhou Science&Technological Project (Y20190151).

None

#### 5) **Availability of data and material**

We declare that the data supporting the results reported in the article are available in the published article.

#### 6) **Authors' Contributions**

The authors CP, BL and YD did the paper research and wrote the manuscript. LS contributed to figure drawing and manuscript review. WH helped with proofreading. GL, ZZ and ZL provided conceptualization and editing.

#### 7) **Acknowledgement**

The authors gratefully acknowledge helps in the preparation and revision of the manuscript from all members in Liu lab.

#### 8) **Authors' biography**

None

### References

1. Collaborators, G.B.D.O., et al., *Health Effects of Overweight and Obesity in 195 Countries over 25 Years*. N Engl J Med, 2017. **377**(1): p. 13-27.
2. Kyrou, I., et al., *Clinical problems caused by obesity*, in *Endotext (Internet)*. 2018, MDText.com, Inc.
3. Mozaffarian, D., et al., *Changes in diet and lifestyle and long-term weight gain in women and men*. New England Journal of Medicine, 2011. **364**(25): p. 2392-2404.
4. Wren, A., et al., *The novel hypothalamic peptide ghrelin stimulates food intake and growth hormone secretion*. Endocrinology, 2000. **141**(11): p. 4325-4328.
5. Kojima, M. and K. Kangawa, *Ghrelin: structure and function*. Physiological reviews, 2005.
6. Covasa, M., *Deficits in gastrointestinal responses controlling food intake and body weight*. American Journal of Physiology-Regulatory, Integrative and Comparative Physiology, 2010. **299**(6): p. R1423-R1439.
7. Batterham, R.L., et al., *Gut hormone PYY 3-36 physiologically inhibits food intake*. Nature, 2002. **418**(6898): p. 650-654.
8. Tolhurst, G., et al., *Short-chain fatty acids stimulate glucagon-like peptide-1 secretion via the G-protein-coupled receptor FFAR2*. Diabetes, 2012. **61**(2): p. 364-71.
9. Zhang, Y., et al., *Positional cloning of the mouse obese gene and its human homologue*. Nature, 1994. **372**(6505): p. 425-432.
10. Saltiel, A.R. and C.R. Kahn, *Insulin signalling and the regulation of glucose and lipid metabolism*. Nature, 2001. **414**(6865): p. 799-806.
11. Xiong, Y., et al., *Short-chain fatty acids stimulate leptin production in adipocytes through the G protein-coupled receptor GPR41*. Proceedings of the National Academy of Sciences, 2004. **101**(4): p. 1045-1050.

12. Wang, L., et al., *LPS inhibits fasted plasma ghrelin levels in rats: role of IL-1 and PGs and functional implications*. American Journal of Physiology-Gastrointestinal and Liver Physiology, 2006. **291**(4): p. G611-G620.
13. Kuhre, R.E., et al., *Bile acids are important direct and indirect regulators of the secretion of appetite-and metabolism-regulating hormones from the gut and pancreas*. Molecular metabolism, 2018. **11**: p. 84-95.
14. Lebrun, L.J., et al., *Enteroendocrine L Cells Sense LPS after Gut Barrier Injury to Enhance GLP-1 Secretion*. Cell Rep, 2017. **21**(5): p. 1160-1168.
15. Schwartz, M.W., et al., *Central nervous system control of food intake*. Nature, 2000. **404**(6778): p. 661-671.
16. Maffei, á., et al., *Leptin levels in human and rodent: measurement of plasma leptin and ob RNA in obese and weight-reduced subjects*. Nature medicine, 1995. **1**(11): p. 1155-1161.
17. Levin, B.E. and A.A. Dunn-Meynell, *Reduced central leptin sensitivity in rats with diet-induced obesity*. American Journal of Physiology-Regulatory, Integrative and Comparative Physiology, 2002. **283**(4): p. R941-R948.
18. Bagarolli, R.A., et al., *Probiotics modulate gut microbiota and improve insulin sensitivity in DIO mice*. The Journal of nutritional biochemistry, 2017. **50**: p. 16-25.
19. De Lartigue, G., et al., *Diet-induced obesity leads to the development of leptin resistance in vagal afferent neurons*. American Journal of Physiology-Endocrinology and Metabolism, 2011. **301**(1): p. E187-E195.
20. Lin, S., et al., *Development of high fat diet-induced obesity and leptin resistance in C57Bl/6J mice*. International journal of obesity, 2000. **24**(5): p. 639-646.
21. Topping, D.L. and P.M. Clifton, *Short-chain fatty acids and human colonic function: roles of resistant starch and nonstarch polysaccharides*. Physiological reviews, 2001.
22. Canfora, E.E., J.W. Jocken, and E.E. Blaak, *Short-chain fatty acids in control of body weight and insulin sensitivity*. Nature Reviews Endocrinology, 2015. **11**(10): p. 577.
23. Roselli, M., et al., *Beneficial effects of a selected probiotic mixture administered to high fat-fed mice before and after the development of obesity*. Journal of Functional Foods, 2018. **45**: p. 321-329.
24. Zhang, X.-l., et al., *The protective effects of probiotic-fermented soymilk on high-fat diet-induced hyperlipidemia and liver injury*. Journal of Functional Foods, 2017. **30**: p. 220-227.
25. Hong, Y.-H., et al., *Acetate and propionate short chain fatty acids stimulate adipogenesis via GPCR43*. Endocrinology, 2005. **146**(12): p. 5092-5099.
26. Zaibi, M.S., et al., *Roles of GPR41 and GPR43 in leptin secretory responses of murine adipocytes to short chain fatty acids*. FEBS letters, 2010. **584**(11): p. 2381-2386.
27. Okada, T., et al., *Analysis of peripheral ghrelin signaling via the vagus nerve in ghrelin receptor-restored GHSR-null mice*. Neuroscience letters, 2018. **681**: p. 50-55.
28. Osawa, H., et al., *Impaired production of gastric ghrelin in chronic gastritis associated with Helicobacter pylori*. The Journal of Clinical Endocrinology & Metabolism, 2005. **90**(1): p. 10-16.
29. Nwokolo, C., et al., *Plasma ghrelin following cure of Helicobacter pylori*. Gut, 2003. **52**(5): p. 637-640.
30. Hooi, J.K., et al., *Global prevalence of Helicobacter pylori infection: systematic review and meta-analysis*. Gastroenterology, 2017. **153**(2): p. 420-429.
31. Bando, M., et al., *IL-1 $\beta$  directly suppress ghrelin mRNA expression in ghrelin-*

- producing cells*. Molecular and Cellular Endocrinology, 2017. **447**: p. 45-51.
32. Madison, L.D., et al., *Prostacyclin signaling regulates circulating ghrelin during acute inflammation*. Journal of Endocrinology, 2008. **196**(2): p. 263.
  33. Ahire, J.J., et al., *Antioxidative potential of folate producing probiotic Lactobacillus helveticus CD6*. Journal of food science and technology, 2013. **50**(1): p. 26-34.
  34. Tellez, A., et al., *Characterization of immune-active peptides obtained from milk fermented by Lactobacillus helveticus*. Journal of Dairy Research, 2010. **77**(2): p. 129-136.
  35. He, H., et al., *CpG oligodeoxynucleotide and double-stranded RNA synergize to enhance nitric oxide production and mRNA expression of inducible nitric oxide synthase, pro-inflammatory cytokines and chemokines in chicken monocytes*. Innate immunity, 2011. **17**(2): p. 137-144.
  36. Kant, R., et al., *Immunostimulatory CpG motifs in the genomes of gut bacteria and their role in human health and disease*. Journal of medical microbiology, 2014. **63**(2): p. 293-308.
  37. Torres-Fuentes, C., et al., *Short-chain fatty acids and microbiota metabolites attenuate ghrelin receptor signaling*. The FASEB Journal, 2019. **33**(12): p. 13546-13559.
  38. Baranowska, B., et al., *Disturbed release of gastrointestinal peptides in anorexia nervosa and in obesity*. Diabetes, Obesity and Metabolism, 2000. **2**(2): p. 99-103.
  39. Duca, F.A., L. Zhong, and M. Covasa, *Reduced CCK signaling in obese-prone rats fed a high fat diet*. Hormones and behavior, 2013. **64**(5): p. 812-817.
  40. Palazzo, M., et al., *Activation of enteroendocrine cells via TLRs induces hormone, chemokine, and defensin secretion*. The Journal of Immunology, 2007. **178**(7): p. 4296-4303.
  41. Falcinelli, S., et al., *Lactobacillus rhamnosus lowers zebrafish lipid content by changing gut microbiota and host transcription of genes involved in lipid metabolism*. Scientific reports, 2015. **5**: p. 9336.
  42. Belguesmia, Y., et al., *Novel probiotic evidence of lactobacilli on immunomodulation and regulation of satiety hormones release in intestinal cells*. Journal of Functional Foods, 2016. **24**: p. 276-286.
  43. Grandt, D., et al., *Two molecular forms of peptide YY (PYY) are abundant in human blood: characterization of a radioimmunoassay recognizing PYY 1-36 and PYY 3-36*. Regulatory peptides, 1994. **51**(2): p. 151-159.
  44. Batterham, R.L., et al., *Critical role for peptide YY in protein-mediated satiation and body-weight regulation*. Cell metabolism, 2006. **4**(3): p. 223-233.
  45. Karra, E., K. Chandarana, and R.L. Batterham, *The role of peptide YY in appetite regulation and obesity*. The Journal of physiology, 2009. **587**(1): p. 19-25.
  46. Brooks, L., et al., *Fermentable carbohydrate stimulates FFAR2-dependent colonic PYY cell expansion to increase satiety*. Molecular metabolism, 2017. **6**(1): p. 48-60.
  47. Psichas, A., et al., *The short chain fatty acid propionate stimulates GLP-1 and PYY secretion via free fatty acid receptor 2 in rodents*. International journal of obesity, 2015. **39**(3): p. 424-429.
  48. Samuel, B.S., et al., *Effects of the gut microbiota on host adiposity are modulated by the short-chain fatty-acid binding G protein-coupled receptor, Gpr41*. Proceedings of the National Academy of Sciences, 2008. **105**(43): p. 16767-16772.

49. Qu, L., et al., *Antidiabetic effects of Lactobacillus casei fermented Yogurt through reshaping gut microbiota structure in Type 2 diabetic rats*. Journal of agricultural and food chemistry, 2018. **66**(48): p. 12696-12705.
50. Mertens, K.L., et al., *Bile acid signaling pathways from the enterohepatic circulation to the central nervous system*. Frontiers in neuroscience, 2017. **11**: p. 617.
51. Roberts, R.E., et al., *The relationship between postprandial bile acid concentration, GLP-1, PYY and ghrelin*. Clinical endocrinology, 2011. **74**(1): p. 67-72.
52. Studer, N., et al., *Functional intestinal bile acid 7 $\alpha$ -dehydroxylation by Clostridium scindens associated with protection from Clostridium difficile infection in a gnotobiotic mouse model*. Frontiers in cellular and infection microbiology, 2016. **6**: p. 191.
53. Kawamata, Y., et al., *AG protein-coupled receptor responsive to bile acids*. Journal of Biological Chemistry, 2003. **278**(11): p. 9435-9440.
54. Drucker, D.J. and M.A. Nauck, *The incretin system: glucagon-like peptide-1 receptor agonists and dipeptidyl peptidase-4 inhibitors in type 2 diabetes*. Lancet (London, England), 2006. **368**(9548): p. 1696-1705.
55. Yadav, H., et al., *Beneficial metabolic effects of a probiotic via butyrate-induced GLP-1 hormone secretion*. J Biol Chem, 2013. **288**(35): p. 25088-97.
56. Ma, J., et al., *Genetically Engineered Escherichia coli Nissle 1917 Secreting GLP-1 Analog Exhibits Potential Antiobesity Effect in High-Fat Diet-Induced Obesity Mice*. Obesity (Silver Spring), 2020. **28**(2): p. 315-322.
57. Dailey, M.J. and T.H. Moran, *Glucagon-like peptide 1 and appetite*. Trends Endocrinol Metab, 2013. **24**(2): p. 85-91.
58. Shah, M. and A. Vella, *Effects of GLP-1 on appetite and weight*. Rev Endocr Metab Disord, 2014. **15**(3): p. 181-7.
59. Cani, P.D., et al., *Dietary non-digestible carbohydrates promote L-cell differentiation in the proximal colon of rats*. Br J Nutr, 2007. **98**(1): p. 32-7.
60. Zhao, L., et al., *Gut bacteria selectively promoted by dietary fibers alleviate type 2 diabetes*. Science, 2018. **359**(6380): p. 1151-1156.
61. Katsuma, S., A. Hirasawa, and G. Tsujimoto, *Bile acids promote glucagon-like peptide-1 secretion through TGR5 in a murine enteroendocrine cell line STC-1*. Biochem Biophys Res Commun, 2005. **329**(1): p. 386-90.
62. Brighton, C.A., et al., *Bile Acids Trigger GLP-1 Release Predominantly by Accessing Basolaterally Located G Protein-Coupled Bile Acid Receptors*. Endocrinology, 2015. **156**(11): p. 3961-70.
63. Kuhre, R.E., et al., *Bile acids are important direct and indirect regulators of the secretion of appetite- and metabolism-regulating hormones from the gut and pancreas*. Mol Metab, 2018. **11**: p. 84-95.
64. Pathak, P., et al., *Farnesoid X receptor induces Takeda G-protein receptor 5 cross-talk to regulate bile acid synthesis and hepatic metabolism*. J Biol Chem, 2017. **292**(26): p. 11055-11069.
65. Ducastel, S., et al., *The nuclear receptor FXR inhibits Glucagon-Like Peptide-1 secretion in response to microbiota-derived Short-Chain Fatty Acids*. Sci Rep, 2020. **10**(1): p. 174.
66. Chimerel, C., et al., *Bacterial metabolite indole modulates incretin secretion from intestinal enteroendocrine L cells*. Cell Rep, 2014. **9**(4): p. 1202-8.
67. Panaro, B.L., et al., *Intestine-selective reduction of Gcg expression reveals the importance of the distal gut for GLP-1 secretion*. Mol Metab, 2020. **37**: p. 100990.

68. Loh, K., et al., *Insulin controls food intake and energy balance via NPY neurons*. Mol Metab, 2017. **6**(6): p. 574-584.
69. Dodd, G.T., et al., *Leptin and insulin act on POMC neurons to promote the browning of white fat*. Cell, 2015. **160**(1-2): p. 88-104.
70. Jastreboff, A.M., et al., *Neural correlates of stress- and food cue-induced food craving in obesity: association with insulin levels*. Diabetes Care, 2013. **36**(2): p. 394-402.
71. Mebel, D.M., et al., *Insulin in the ventral tegmental area reduces hedonic feeding and suppresses dopamine concentration via increased reuptake*. European Journal of Neuroscience, 2012. **36**(3): p. 2336-2346.
72. Figlewicz, D.P. and S.C. Benoit, *Insulin, leptin, and food reward: update 2008*. American Journal of Physiology-Regulatory, Integrative and Comparative Physiology, 2009. **296**(1): p. R9-R19.
73. Liu, J.-L., et al., *Controversial Roles of Gut Microbiota-Derived Short-Chain Fatty Acids (SCFAs) on Pancreatic  $\beta$ -Cell Growth and Insulin Secretion*. International Journal of Molecular Sciences, 2020. **21**(3): p. 910.
74. Tang, C., et al., *Loss of FFA2 and FFA3 increases insulin secretion and improves glucose tolerance in type 2 diabetes*. Nat Med, 2015. **21**(2): p. 173-7.
75. McNelis, J.C., et al., *GPR43 Potentiates beta-Cell Function in Obesity*. Diabetes, 2015. **64**(9): p. 3203-17.
76. Vrieze, A., et al., *Transfer of intestinal microbiota from lean donors increases insulin sensitivity in individuals with metabolic syndrome*. Gastroenterology, 2012. **143**(4): p. 913-6 e7.
77. Vrieze, A., et al., *Impact of oral vancomycin on gut microbiota, bile acid metabolism, and insulin sensitivity*. J Hepatol, 2014. **60**(4): p. 824-31.
78. Gao, Z., et al., *Butyrate improves insulin sensitivity and increases energy expenditure in mice*. Diabetes, 2009. **58**(7): p. 1509-17.
79. Carvalho, B.M., et al., *Modulation of gut microbiota by antibiotics improves insulin signalling in high-fat fed mice*. Diabetologia, 2012. **55**(10): p. 2823-2834.
80. Pedersen, H.K., et al., *Human gut microbes impact host serum metabolome and insulin sensitivity*. Nature, 2016. **535**(7612): p. 376-81.
81. De Vadder, F., et al., *Microbiota-Produced Succinate Improves Glucose Homeostasis via Intestinal Gluconeogenesis*. Cell Metab, 2016. **24**(1): p. 151-7.
82. Chambers, E.S., et al., *Effects of targeted delivery of propionate to the human colon on appetite regulation, body weight maintenance and adiposity in overweight adults*. Gut, 2015. **64**(11): p. 1744-1754.
83. Parnell, J.A. and R.A. Reimer, *Weight loss during oligofructose supplementation is associated with decreased ghrelin and increased peptide YY in overweight and obese adults*. The American journal of clinical nutrition, 2009. **89**(6): p. 1751-1759.
84. Bergman, E., *Energy contributions of volatile fatty acids from the gastrointestinal tract in various species*. Physiological reviews, 1990. **70**(2): p. 567-590.
85. Isken, F., et al., *Effects of long-term soluble vs. insoluble dietary fiber intake on high-fat diet-induced obesity in C57BL/6J mice*. The Journal of nutritional biochemistry, 2010. **21**(4): p. 278-284.
86. Turnbaugh, P.J., et al., *An obesity-associated gut microbiome with increased capacity for energy harvest*. nature, 2006. **444**(7122): p. 1027.
87. Zhao, L., *The gut microbiota and obesity: from correlation to causality*. Nat Rev Microbiol, 2013. **11**(9): p. 639-47.
88. Wanchai, K., et al., *Probiotic Lactobacillus paracasei HII01 protects rats against obese-insulin resistance-induced kidney injury and impaired renal organic anion*

- transporter 3 function*. Clin Sci (Lond), 2018. **132**(14): p. 1545-1563.
89. Jamar, G., D.A. Ribeiro, and L.P. Pisani, *High-fat or high-sugar diets as trigger inflammation in the microbiota-gut-brain axis*. Critical Reviews in Food Science and Nutrition, 2020: p. 1-19.
90. Claire, B., G. de Lartigue, and H.E. Raybould, *Chronic exposure to low dose bacterial lipopolysaccharide inhibits leptin signaling in vagal afferent neurons*. Physiology & behavior, 2015. **139**: p. 188-194.
91. De Luca Jr, L.A., et al., *Participation of  $\alpha 2$ -adrenoceptors in sodium appetite inhibition during sickness behaviour following administration of lipopolysaccharide*. The Journal of Physiology, 2016. **594**(6): p. 1607-1616.
92. Rummel, C., et al., *Leptin regulates leukocyte recruitment into the brain following systemic LPS-induced inflammation*. Molecular psychiatry, 2010. **15**(5): p. 523-534.
93. Iwasa, T., et al., *Changes in responsiveness of appetite, leptin and hypothalamic IL-1 $\beta$  and TNF- $\alpha$  to lipopolysaccharide in developing rats*. Journal of neuroimmunology, 2011. **236**(1-2): p. 10-16.
94. Krieg, A.M., et al., *CpG motifs in bacterial DNA trigger direct B-cell activation*. Nature, 1995. **374**(6522): p. 546-549.
95. Hildebrandt, M.A., et al., *High-fat diet determines the composition of the murine gut microbiome independently of obesity*. Gastroenterology, 2009. **137**(5): p. 1716-1724. e2.
96. Tennaoune, N., et al., *Bacterial ClpB heat-shock protein, an antigen-mimetic of the anorexigenic peptide  $\alpha$ -MSH, at the origin of eating disorders*. Translational psychiatry, 2014. **4**(10): p. e458-e458.
97. Legrand, R., et al., *Commensal Hafnia alvei strain reduces food intake and fat mass in obese mice—A new potential probiotic for appetite and body weight management*. International Journal of Obesity, 2020. **44**(5): p. 1041-1051.
98. Million, á., et al., *Correlation between body mass index and gut concentrations of Lactobacillus reuteri, Bifidobacterium animalis, Methanobrevibacter smithii and Escherichia coli*. International journal of obesity, 2013. **37**(11): p. 1460-1466.